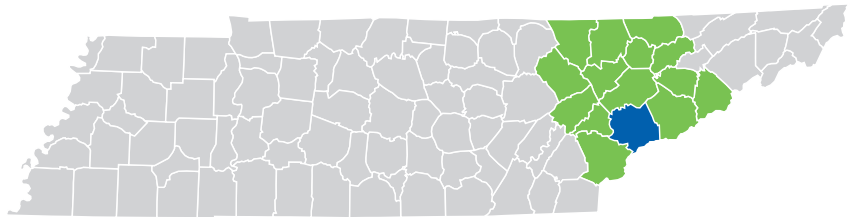




# BLOUNT

## COUNTY



### Here, You Can Have It All.

**HAVE YOU EVER EXPERIENCED A MOMENT THAT TRULY TAKES YOUR BREATH AWAY?** Whether it's the vivid display of autumn leaves along the Foothills Parkway, the quiet awe of watching a mother bear tend to her cubs in Cades Cove, or the magic of synchronous fireflies lighting up a spring night—this place stirs something in everyone. A portion of the Great Smoky Mountains National Park lies within Blount County, placing it at the heart of the Greater Smokies Region.

But it's not just natural beauty that sets us apart—Blount County is the business side of the Smokies. Industry thrives here, with McGhee Tyson Airport (TYS) located within the county and direct access to major highways, making it a strategic hub for a wide range of industries. A skilled, reliable workforce and a pro-business climate attract top-tier companies, while strong partnerships with regional higher education institutions ensure a steady pipeline of talent and training.

Looking to move mountains? Here, you can have it all.

**East Tennessee – Moving Mountains.**



Blount County at a Glance



**STRATEGIC LOCATION:** Located within the Knoxville MSA and home to McGhee Tyson Airport, the region’s major commercial airport offering daily flights to 30+ non-stop destinations.



**ROBUST INFRASTRUCTURE:** Convenient access to I-140, U.S. Highways 129, 321, and 411, direct rail access, and home to McGhee Tyson Airport.



**RELIABLE ENERGY:** TVA is the nation’s most dependable power source and one of the largest electric power systems in the country, providing safe, affordable, clean, and reliable energy.



**INDUSTRIAL PARKS:** Multiple industrial and business parks, including Pellissippi Place Research and Development Park, with a variety of site options available.



**SKILLED WORKFORCE:** A strong talent pipeline supported by top-rated public schools and higher education institutions, including Maryville College, Pellissippi State Community College (Blount County), the Ruth & Steve West Workforce Development Center, TCAT Knoxville, and the nearby University of Tennessee.



**OUTDOOR PARADISE:** Home to the Great Smoky Mountains National Park with 500,000 acres of protected land, plus access to Cades Cove and endless recreational opportunities.



**LAKESIDE LIVING:** Fort Loudoun and Tellico Lakes offer scenic beauty, over 500 miles of shoreline, and recreational access to boating, fishing, and lakeside living.



**HISTORY & CULTURE:** Home to the Clayton Center for the Arts, the Appalachian Ballet Company, the Great Smoky Mountains Heritage Center Museum, and a variety of festivals—offering year-round cultural experiences.

PER CAPITA INCOME

	2024	2029
Blount County	\$39,521	\$46,265
Tennessee	\$38,807	\$45,727
United States	\$43,829	\$51,203

MEDIAN HOUSEHOLD INCOME

	2024	2029
Blount County	\$74,315	\$84,312
Tennessee	\$69,015	\$81,637
United States	\$79,068	\$91,442

DEMOGRAPHICS

TOTAL POPULATION

	2020	2024	2029	Annual Growth Rate
Blount County	135,657	143,599	152,673	1.3%
15-County Region	1,115,069	1,260,699	1,333,202	1.2%
Tennessee	6,355,518	7,214,084	7,493,617	0.8%

POPULATION BY AGE

	2020	2024	2029
Under 5	5.0%	5.0%	5.0%
5 to 9	5.0%	5.0%	5.0%
10 to 14	6.0%	6.0%	6.0%
15 to 24	11.0%	11.0%	10.0%
25 to 34	12.0%	12.0%	12.0%
35 to 44	12.0%	12.0%	13.0%
45 to 54	13.0%	13.0%	12.0%
55 to 64	15.0%	14.0%	14.0%
65+	21.0%	22.0%	23.0%
Median Age	43.9	44	44.6

37% of the 2024 population is prime working age (25-54)

POPULATION BY RACE & ETHNICITY

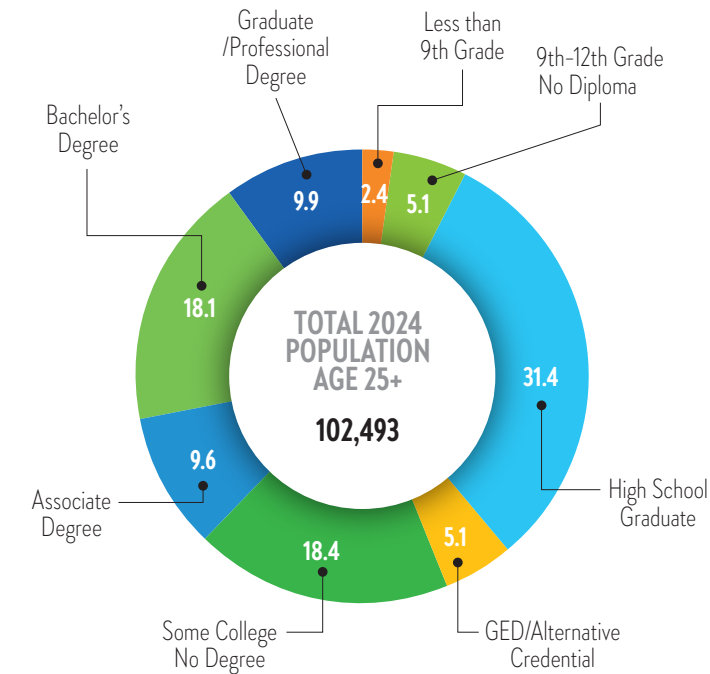
	2020	2024	2029
White	88.2%	87.4%	86.5%
Black	2.7%	2.7%	2.9%
American Indian/ Alaska Native	0.4%	0.4%	0.4%
Asian	1.0%	1.0%	1.1%
Hawaiian / Pacific Islander	0.0%	0.0%	0.0%
Two or more races	1.8%	6.4%	6.9%
Hispanic Origin (Any race)	4.2%	4.8%	5.2%

HOUSEHOLDS & FAMILIES

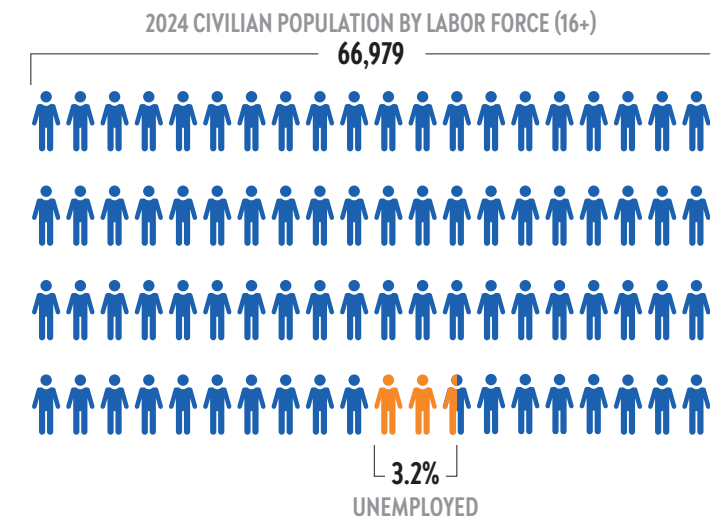
	2020	2024	2029
Total Households	54,720	57,844	60,644
Total Families	37,536	29,212	40,933
Average Household Size	2.43	2.42	2.4
Owner Occupied	67%	69.10%	70%
Renter Occupied	24%	23.00%	22.40%
Vacant	9%	7.90%	7.60%

EDUCATION AND  
WORKFORCE

2024 POPULATION 25+ BY  
EDUCATIONAL ATTAINMENT

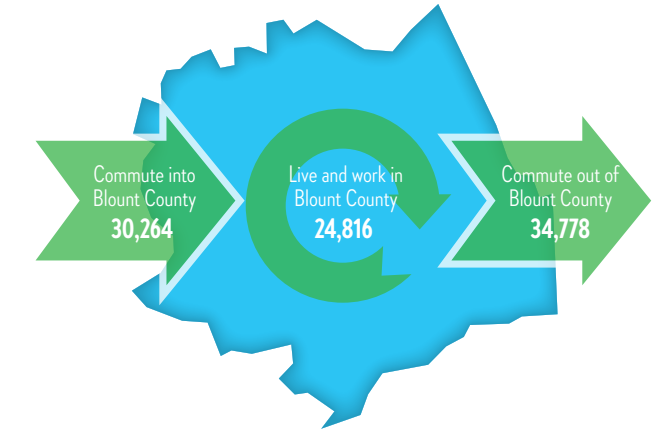


CIVILIAN POPULATION BY LABOR FORCE (16+)



COMMUTING  
PATTERNS

WORKER INFLOW & OUTFLOW (2022)

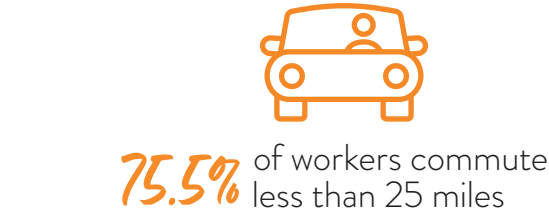


WHERE WORKERS LIVE

	Count	Share
All Counties	55,080	100.00%
Blount County, TN	24,816	45.10%
Knox County, TN	12,619	22.90%
Sevier County, TN	1,845	3.30%
Loudon County, TN	1,826	3.30%
Monroe County, TN	1,227	2.20%
Anderson County, TN	1,071	1.90%
Davidson County, TN	815	1.50%
Hamilton County, TN	793	1.40%
Roane County, TN	715	1.30%
Jefferson County, TN	611	1.10%
All Other Locations	8,742	15.90%

TRAVEL DISTANCE TO WORK

Less than 10 miles	43.80%
10 - 24 miles	31.70%
25 - 50 miles	8.70%
50 miles or more	15.80%



BUSINESS & INDUSTRY

2024 EMPLOYMENT BY INDUSTRY		
	%	Employees
Agricultural, Natural Resources & Mining	0.40%	250
Business & Professional Services	14.60%	9,154
Construction	6.29%	3,946
Education & Health Services	8.65%	5,422
Financial Activities	4.54%	2,846
Government	13.31%	8,344
Information	1.11%	697
Leisure & Hospitality	11.32%	7,095
Manufacturing	15.61%	9,783
Other Services	4.98%	3,123
Retail	11.60%	7,274
Trade, Transportation & Utilities	7.59%	4,755
Total	100.00%	62,689



TOP 10 MAJOR EMPLOYERS

Company	Industry	Employee Range
Denso Manufacturing Tennessee, Inc	Manufacturing	2501-5000
Prisma Health Blount Memorial Hospital	Hospital	1001-2500
Blount County Schools	Schools	1000-2500
Arconic Inc.	Manufacturing	1001-2500
Blackberry Farm	Hospitality	1001-2500
Vanderbilt Mortgage & Finance	Financial Services	501-1000
Clayton Homes, Inc.	Manufacturing	501-1000
Blount County Government	Government	501-1000
Newell Brands, Inc.	Manufacturing	501-1000
Accenture Hospitality Services	Financial Services	501-1000

GROSS RETAIL SALES



# BLOUNT COUNTY

## TRANSPORTATION



**Airport**  
McGhee Tyson Airport  
10,000' Runway  
30+ non-stop destinations  
Over 3 million passengers 2023-2024



**Highways**  
Interstate: **40**  
U.S. Highways:  
**129 321 411**  
State Highways:  
**33 35 71 72 73 115 162**  
**333 334 335 336 337 446 447**



**Railroads**  
CSX  
Norfolk Southern

## TAXES

### PROPERTY TAX

Property Tax Rate (County)	\$1.59
State Property Tax	None
Assessment Ratio: Residential Property	25%
Assessment Ratio: Farm Property	25%
Assessment Ratio: Commercial/Industrial Property	40%
Assessment Ratio: Public Utility Property	55%
Assessment Ratio: Business Personal Property	30%

### SALES TAX

State sales tax rate	7%
County sales tax rate	2.75%
<b>STATE TAX</b>	
State Income Tax on Wages	None
State Income Tax: Interest from Bonds and Notes and Dividends from Stock	None (Hall Income tax was fully repealed January 1, 2021)
Excise Tax (State)	6.5% of Tennessee taxable income
Franchise Tax (state)	0.25% of the greater of net worth or real and tangible property in Tennessee. The minimum tax is \$100.
Unemployment Insurance Tax (state)	2.7% of the first \$7,000 in wages for new employers

## HOUSING

Median rent

**\$2,200**

Median listing home price

**\$455K**

Median listing home price/sq ft

**\$240**

Median sold home price

**\$397.5K**

### SOURCES:

ESRI Demographic & Income Profile  
Lightcast

Realtor.com June 2025  
The Tax Foundation (2024)

TN Comptroller of the Treasury (2024)  
Tennessee Department of Revenue (2024)

TN ECD County profile tool



EAST TENNESSEE ECONOMIC DEVELOPMENT AGENCY

Brad Maul, President / CEO | [bmaul@eteda.org](mailto:bmaul@eteda.org)

10215 Technology Drive, Suite 202 | Knoxville, TN 37932 | 865.777.3833 | [www.eteda.org](http://www.eteda.org)