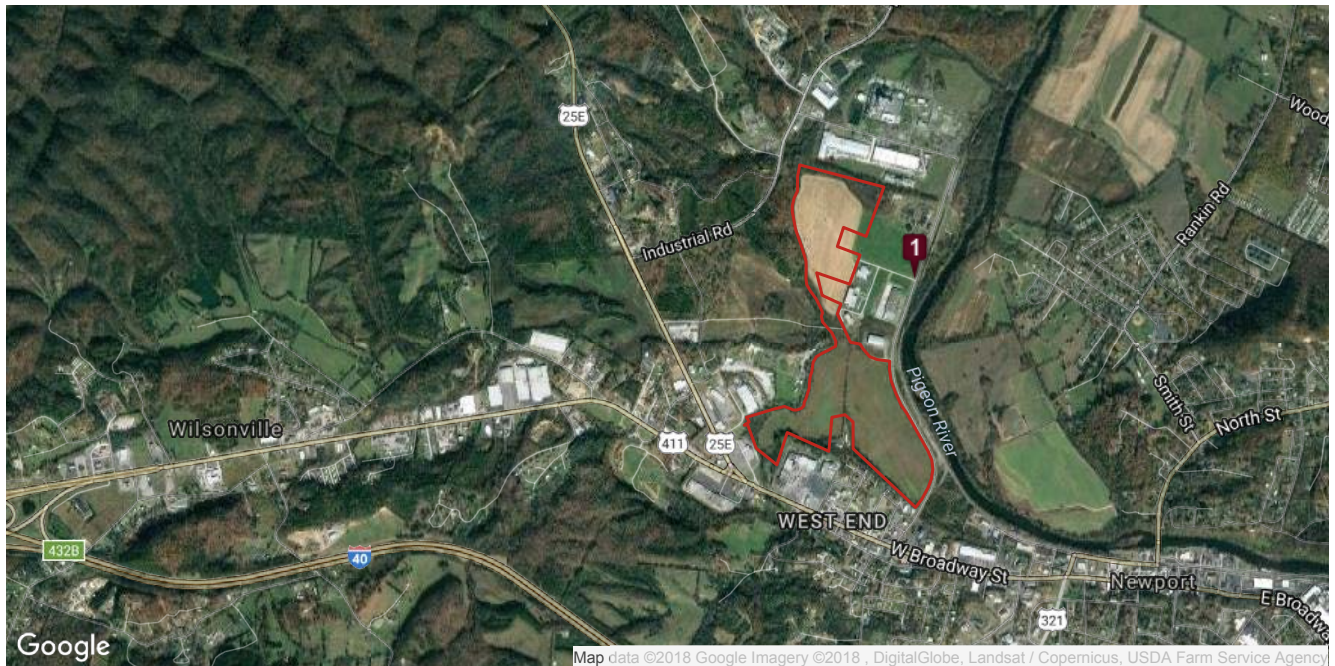


Newport Cocke County Industrial Park
Lisega Blvd - Newport Cocke County Industrial Park
Newport, TN 37821

<https://tvasites.com/InSite3-local/insite3-local-rida.aspx?details=5043&Local=ETEDA>



Industrial Park located in Newport with 75 acres.

ED Contact

Jennifer Karp, Marketing Assistant
East Tennessee Economic Development Agency
10215 Technology Drive, Suite 202
Knoxville, TN 37932
Phone: 865-777-3833
Email: jkarp@eteda.org

Land Information			
Land Types:		Minimum Subdivide:	75
Status:	Available	Site Size (acres):	75
Business/Industrial Park:	yes	Zoning:	Industrial
Total Available (acres):	75	Ownership:	public

Divisible (yes/no):	Yes	
----------------------------	-----	--

Pricing Terms			
For Sale:	Yes	Price Negotiable:	Yes
For Lease:	No		

Geographic/Transportation Information			
Latitude:	35.9807756	Distance to Highway:	0.25
Longitude:	-83.2012839	Interstate Name:	I-40
County:	Cocke	Distance to Interstate:	2
Rail Access:	No	Rail Name:	Norfolk Southern
Brownfield:	no	Distance to Rail:	0
Highway Name:	25		

Utility Information			
Service to Property (Distribution):	Yes	Size of Gas Main:	6
Electric Provider:	Newport Utilities Board	Water On Site:	Yes
Sewer On Site:	Yes	Water Provider:	Newport Utilities Board
Sewer Provider:	Newport Utilities Board	Water Main Size:	12
Sewer Main Size:	24	Telecom on Site:	Yes
Gas On Site:	Yes	Telecom Provider:	Newport Utilities (gig +), AT&T, Comcast, Charter
Gas Provider:	JCCUD		

Additional Information	
Region:	NE Valley

East Tennessee Economic Development Agency,
10215 Technology Drive, Suite 202, Knoxville, TN 37932 | 865-777-3833 | aclear@eteda.org

Material on this website is protected by copyright and trademark laws. The information contained in this website or linked sites is provided on an "as is" basis. We make no guarantee or representation about the accuracy or completeness of the information, and disclaim all warranties, express or implied, including but not limited to warranties of merchantability, fitness for a particular purpose and non-infringement. We are not responsible for any damages arising from the use of information on this site. It is your responsibility to independently investigate the information's accuracy and completeness, and to determine to your satisfaction the suitability of the property for your needs. Any projections, opinions, assumptions or estimates used are for example only and do not represent the current or future performance of any property.