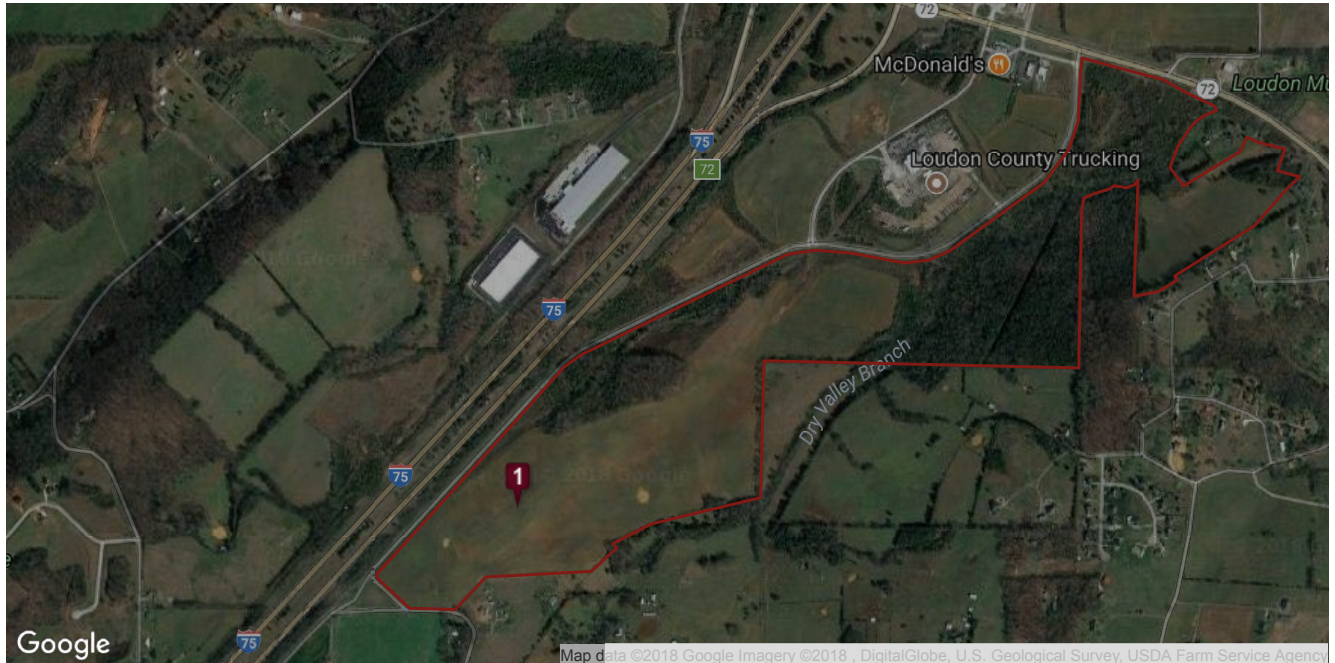




<https://tvasites.com/InSite3-local/insite3-local-rida.aspx?details=5026&Local=ETEDA>



There are available sites from 15-25 acres located in an area planned for industrial development.

ED Contact

Jennifer Karp, Marketing Assistant
East Tennessee Economic Development Agency
10215 Technology Drive, Suite 202
Knoxville, TN 37932
Phone: 865-777-3833
Email: jkarp@eteda.org

Land Information			
Land Types:		Site Size (acres):	113
Status:	Available	Maximum Contiguous Space:	100
Business/Industrial Park:	Yes	Zoning:	Industrial
Total Available (acres):	113	Ownership:	public
Minimum Subdivide:	15		

Pricing Terms			
For Sale:	Yes	Price Negotiable:	Yes
Sale Price:	\$25,000	Sale Price Unit:	acre
For Lease:	No		

Geographic/Transportation Information			
Latitude:	35.720315	Interstate Name:	I-75
Longitude:	-84.403846	Distance to Interstate:	0.2
County:	Loudon	Airport Name:	McGhee Tyson
Rail Access:	No	Distance to Airport:	28
Highway Name:	72	Distance to Port:	10
Distance to Highway:	0.1		

Utility Information			
Service to Property (Distribution):	Yes	Gas Provider:	Loudon Utilities Board
Electric Provider:	Loudon Utilities Board	Size of Gas Main:	4
Sewer On Site:	Yes	Water On Site:	Yes
Sewer Provider:	Loudon Utilities Board	Water Provider:	Loudon Utilities Board
Sewer Main Size:	12	Water Main Size:	12
Gas On Site:	Yes	Telecom Provider:	Bell South

Additional Information	
Region:	NE Valley



East Tennessee Economic Development Agency,
 10215 Technology Drive, Suite 202, Knoxville, TN 37932 | 865-777-3833 | aclear@eteda.org

Material on this website is protected by copyright and trademark laws. The information contained in this website or linked sites is provided on an "as is" basis. We make no guarantee or representation about the accuracy or completeness of the information, and disclaim all warranties, express or implied, including but not limited to warranties of merchantability, fitness for a particular purpose and non-infringement. We are not responsible for any damages arising from the use of information on this site. It is your responsibility to independently investigate the information's accuracy and completeness, and to determine to your satisfaction the suitability of the property for your needs. Any projections, opinions, assumptions or estimates used are for example only and do not represent the current or future performance of any property.