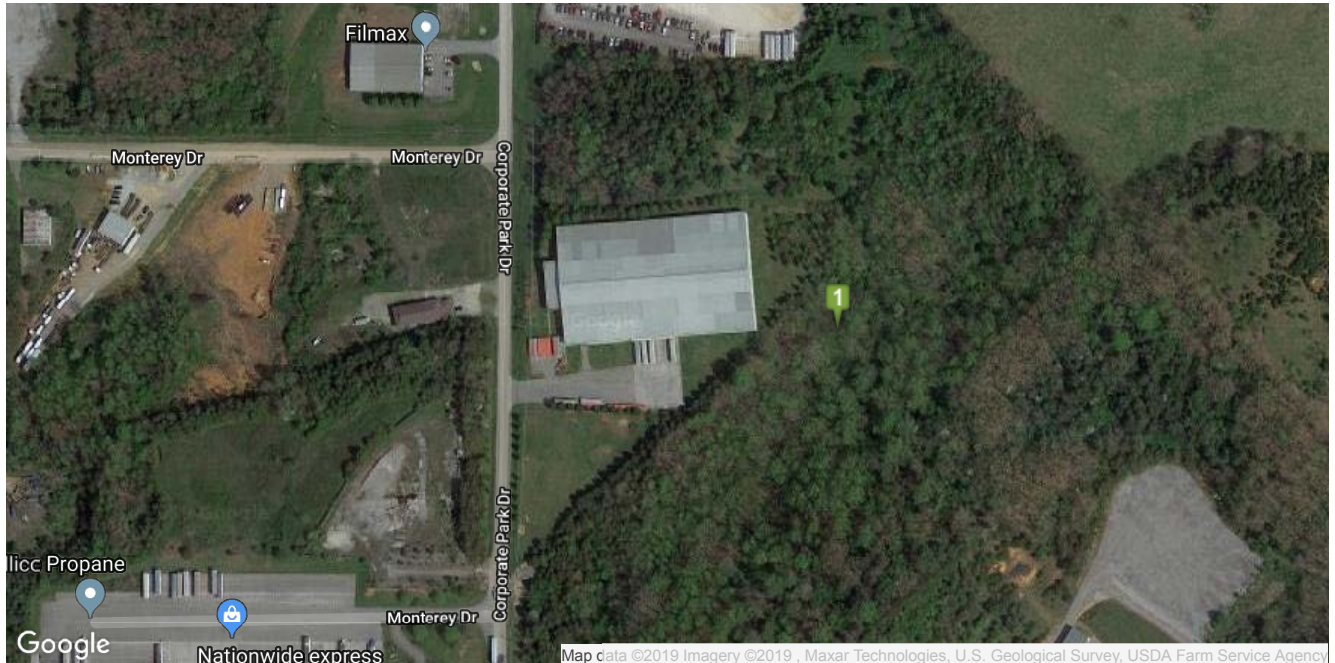


Dave Jones
6400 Corporate Drive
Loudon, TN 37774



<https://prod.tva.atlas-advertising.com/InSite3-local/insite3-local-rida.aspx?details=83583&Local=ETEDA>



Practically new pre-engineered metal building with concrete 12" rodent barrier under walls. 50,000 SF available. Dimensions are 250' x 400' warehouse with 30x100' outset for office. (6) Loading docks with Levelers and concrete staging area for trucks. (1) 12' x 14' Drive in. 24' x 30' ceiling height. All utilities available. Property is located just off I-75, Exit 72

Downloads

[PDF 6400 Corporate Drive Flyer.pdf](#)

ED Contact

Jennifer Karp, Marketing Assistant
East Tennessee Economic Development Agency
10215 Technology Drive, Suite 202
Knoxville, TN 37932
Phone: 865-777-3833
Email: jkarp@eteda.org

Building Information			
Building Types:	Food Grade	Site Size (acres):	15.23
Status:	Available	Zoning:	Industrial
Ceiling Height:	24-30	Cranes:	No
Building Size:	103,000	Dock:	Yes
Total Available (sq ft):	103,000	Number of Truck Docks:	6

Building Dimensions:	250' X 400'	Docks with Levelers:	1
Column Spacing:	30	Drive In Doors:	Yes
Expandable:	Yes	Number of Drive In Doors:	1
Year Built:	2002		

Pricing Terms			
For Sale:	Yes	For Lease:	No
Sale Price:	\$3,500,000.00	Price Negotiable:	Yes

Geographic/Transportation Information			
Latitude:	35.7481839	Interstate Name:	I-75
Longitude:	-84.3952346	Distance to Interstate:	2
County:	Loudon	Interstate Name 2:	I-40
Rail Access:	No	Distance to Interstate 2:	12
Highway Name:	72	Airport Name:	McGhee Tyson Knoxville
Distance to Highway:	1	Distance to Airport:	30

Utility Information			
Service to Property (Distribution):	Yes	Gas On Site:	Yes
Electric Provider:	LUB	Gas Provider:	LUB
Sewer On Site:	Yes	Water On Site:	Yes
Sewer Provider:	LUB	Water Provider:	LUB

Additional Information	
Region:	NE Valley



East Tennessee Economic Development Agency,
 10215 Technology Drive, Suite 202, Knoxville, TN 37932 | 865-777-3833 | aclear@eteda.org

Material on this website is protected by copyright and trademark laws. The information contained in this website or linked sites is provided on an "as is" basis. We make no guarantee or representation about the accuracy or completeness of the information, and disclaim all warranties, express or implied, including but not limited to warranties of merchantability, fitness for a particular purpose and non-infringement. We are not responsible for any damages arising from the use of information on this site. It is your responsibility to independently investigate the information's accuracy and completeness, and to determine to your satisfaction the suitability of the property for your needs. Any projections, opinions, assumptions or estimates used are for example only and do not represent the current or future performance of any property.